

Thank you for purchasing EBS-630 Fixed-Impedance In-Ceiling Speaker. In order to correctly use the device, please read the manual carefully.

If you have any questions or suggestions, please contact our local dealer.

### ■ Features

- Professional, two-way, full-range, 6.5" in-ceiling speaker.
- Utilizes all-weather-proof material for panel frame, against moisture, water, and UV.
- 6.5" woofer with moisture/water-proof composite diaphragm, and 1" silk-dome tweeter with adjustable angle, producing rich mids, delicate highs and an overall warm sound.
- Popular borderless design and magnetic grille, extremely easy for installation and removal.

### ■ Standard Configuration

EBS-630×2  
User Manual×1

### ■ Applications

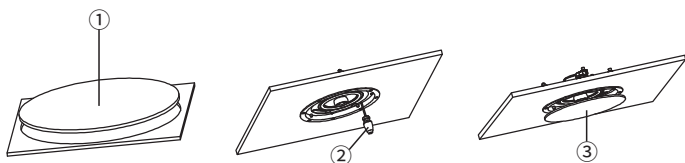
BGM in hotel/restaurant/building/conference center.

### ■ Technical Specifications

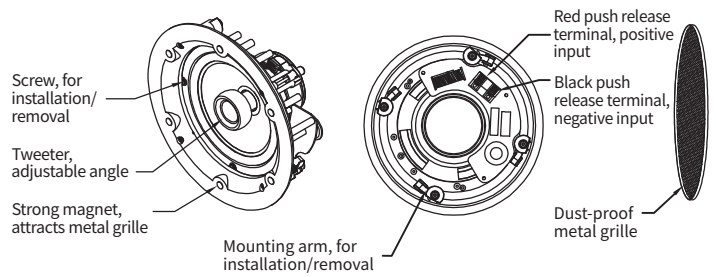
- Rated Power: 60W (AES)
- Rated Impedance: 8Ω
- Frequency Response (±3dB): 52Hz-20kHz
- Sensitivity (1W/1M): 87dB
- Coverage Angle: H110°\*V110°
- Max SPL: 102dB
- Crossover: two-way, passive
- Crossover Frequency: 3000Hz
- Installation Method: flush in-built
- Cut-out Size: ø204mm circle
- Installation Depth: 102mm
- Connection: push release terminal (IN: red+, black-)
- Enclosure: ABS plastic
- Finish: white
- HF: 1" tweeter, silk dome, Nd magnet, 360° rotatable angle
- LF: 6.5" driver \* 1, 28mm voicecoil, 80mm magnet, PP composite cone + NBR surround
- Dimensions: ø235mm\*H102mm
- Net Weight: 1.4Kg

### ■ Installation

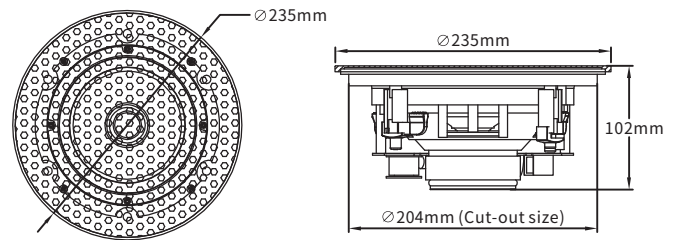
- ① Use the cardboard to cut an opening, at 204mm outer diameter.
- ② Turn clockwise to tighten the 4 screws around the speaker frame; Turn counterclockwise to loosen them for speaker removal.
- ③ Attach the metal grille on top of the installed speaker.



### ■ Illustration



### ■ Dimensions



### ■ Safety Instructions

To avoid electric shock, overheat, fire, radiation, explosion, mechanical risk and injury or property loss due to improper use, please read and observe the following items before use:

1. Please check if the power of the connected equipment matches with that of this product before operation. Adjust the volume to proper level during operation. Do not operate at over-power or high-volume level for extended time to avoid product malfunction or hearing impairment.
2. If there is any abnormality during use (e.g., smoke, strange odor), please kill the power switch and unplug from power source, then send the product to the local dealer for repair.
3. Keep this product and its accessories in a dry and ventilated area. Do not store in a humid or dusty area for extended time. Keep away from fire, rain, liquid intrusion, bumping, throwing, vibrating, or from blocking any ventilation openings, to prevent malfunction.
4. The product must, when installed on walls or ceilings, be fixed firmly in place at adequate strength to prevent from falling.
5. Please abide by safety rules during operation. Do not use the product in places prohibited by laws or regulations to avoid accident.